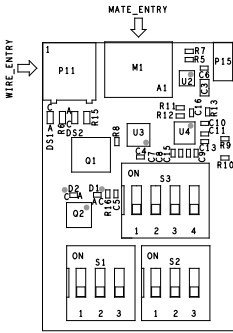

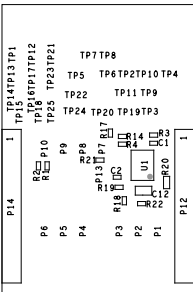
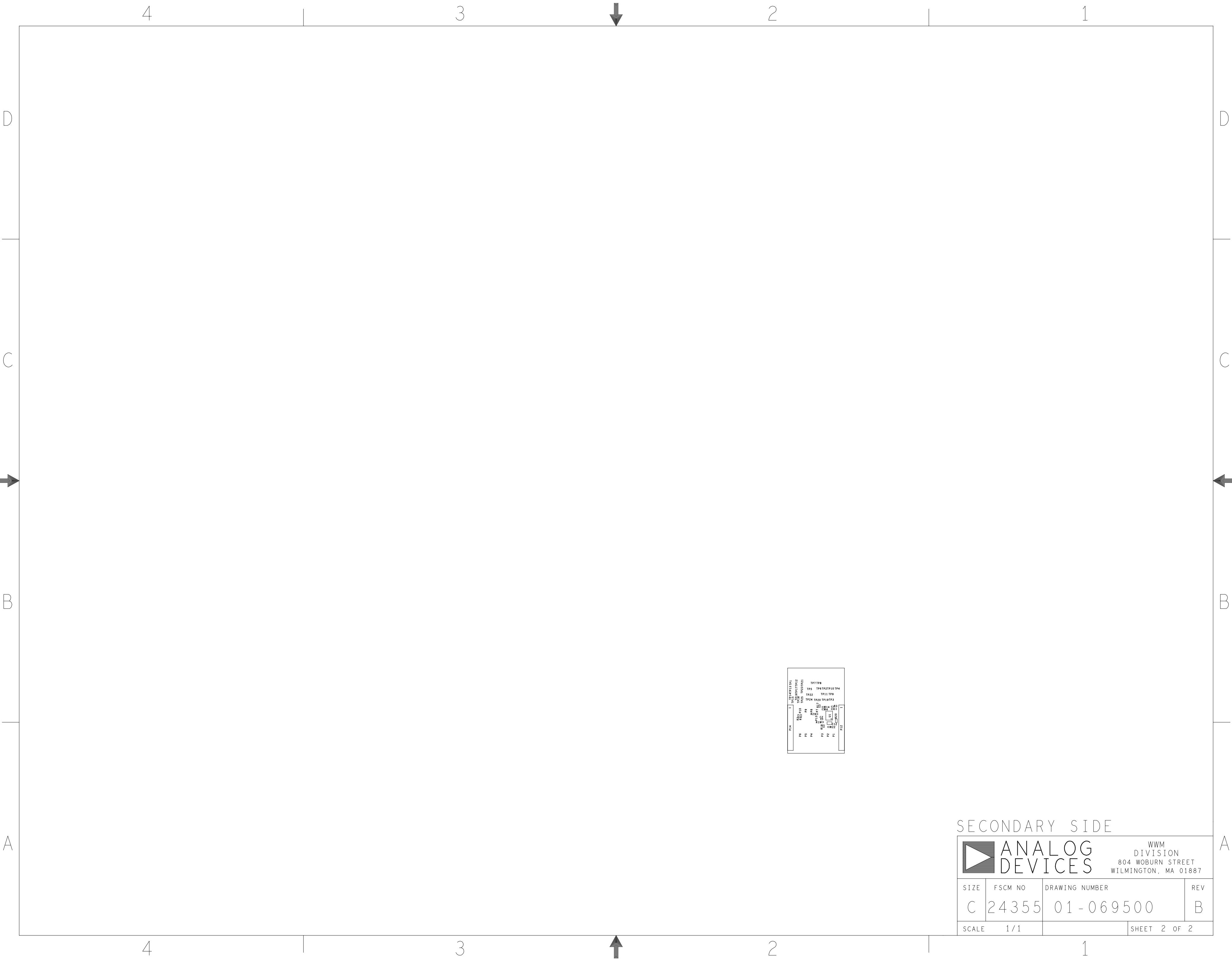


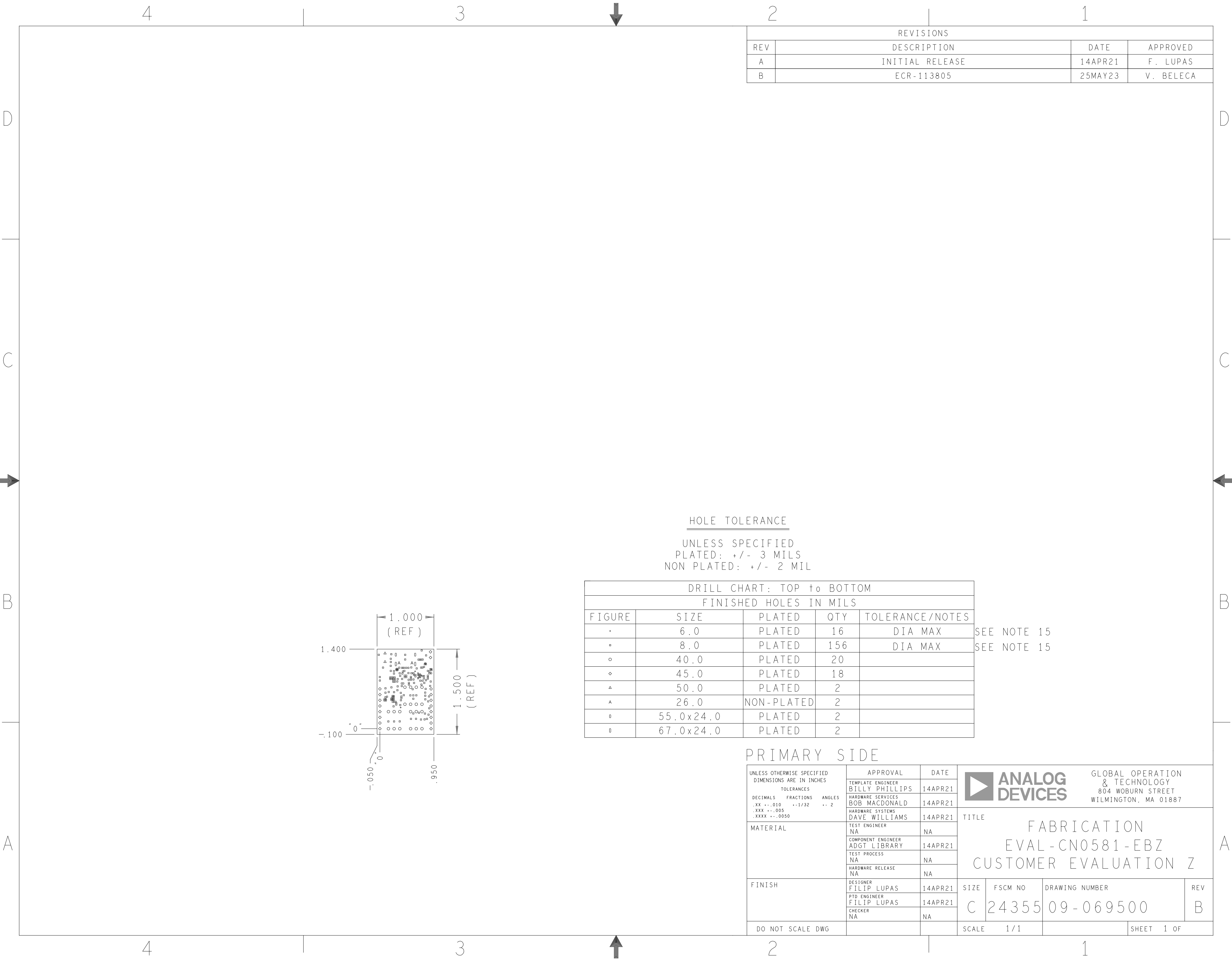
REVISIONS			
REV	DESCRIPTION	DATE	APPROVED
A	INITIAL RELEASE	14APR21	F. LUPAS
B	ECR-113805	25MAY23	V. BELECA



PRIMARY SIDE

UNLESS OTHERWISE SPECIFIED DIMENSIONS ARE IN INCHES TOLERANCES DECIMALS FRACTIONS ANGLES .XX -.010 --1/32 -- 2 .XXX -.005 .XXXX -.0050	APPROVAL		DATE	 GLOBAL OPERATION & TECHNOLOGY 804 WOBURN STREET WILMINGTON, MA 01887			
	TEMPLATE ENGINEER BILLY PHILLIPS		14APR21				
	HARDWARE SERVICES BOB MACDONALD		14APR21				
	HARDWARE SYSTEMS DAVE WILLIAMS		14APR21	TITLE ASSEMBLY EVAL - CN0581-EBZ CUSTOMER EVALUATION Z			
MATERIAL	TEST ENGINEER NA		NA				
	COMPONENT ENGINEER ADGT LIBRARY		14APR21				
	TEST PROCESS NA		NA				
	HARDWARE RELEASE NA		NA				
FINISH	DESIGNER FILIP LUPAS		14APR21	SIZE	FSCM NO	DRAWING NUMBER	REV
	PTD ENGINEER FILIP LUPAS		14APR21	C	24355	01-069500	B
	CHECKER NA		NA				
	DO NOT SCALE DWG			SCALE	1 / 1		SHEET 1 OF 2

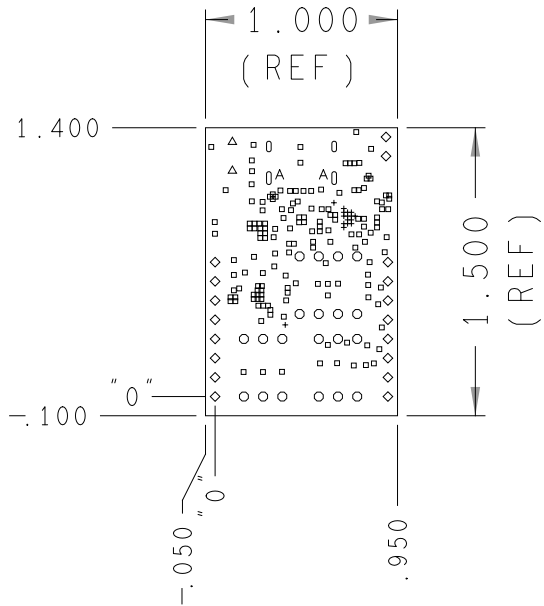




REVISIONS			
REV	DESCRIPTION	DATE	APPROVED
A	INITIAL RELEASE	14APR21	F. LUPAS
B	ECR-113805	25MAY23	V. BELECA

HOLE TOLERANCE
UNLESS SPECIFIED
PLATED: +/- 3 MILS
NON PLATED: +/- 2 MIL

DRILL CHART: TOP to BOTTOM				
FINISHED HOLES IN MILS				
FIGURE	SIZE	PLATED	QTY	TOLERANCE/NOTES
*	6.0	PLATED	16	DIA MAX SEE NOTE 15
•	8.0	PLATED	156	DIA MAX SEE NOTE 15
◦	40.0	PLATED	20	
◊	45.0	PLATED	18	
△	50.0	PLATED	2	
▲	26.0	NON-PLATED	2	
◌	55.0x24.0	PLATED	2	
◐	67.0x24.0	PLATED	2	



PRIMARY SIDE

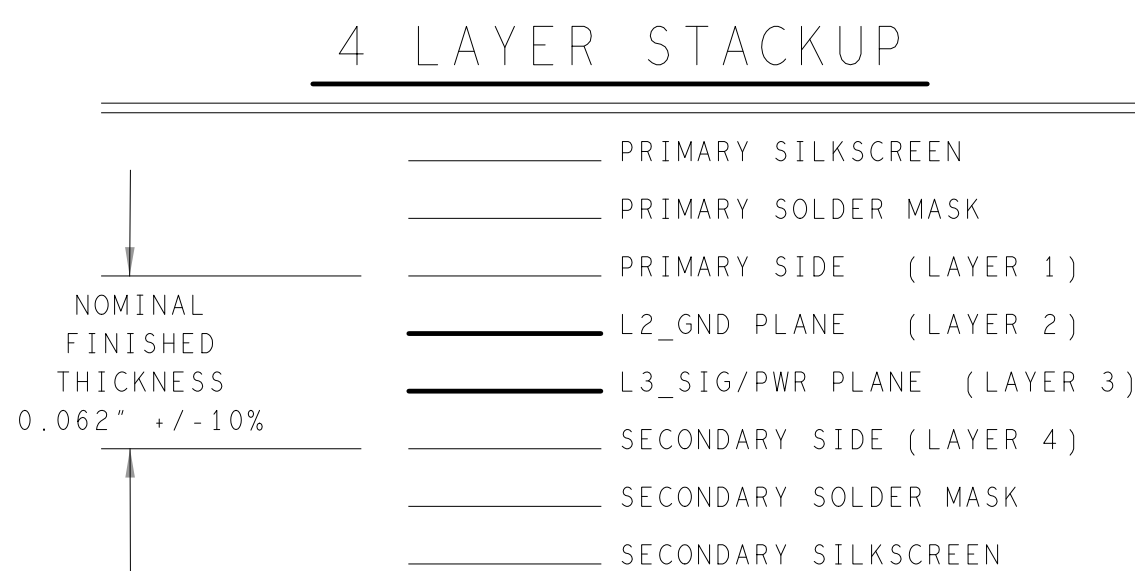
UNLESS OTHERWISE SPECIFIED DIMENSIONS ARE IN INCHES TOLERANCES DECIMALS FRACTIONS ANGLES .XX -.010 --1/32 -- 2 .XXX -.005 .XXXX -.0050			APPROVAL		DATE		<div><div></div><div>ANALOG DEVICES</div></div> <div>GLOBAL OPERATION & TECHNOLOGY 804 WOBURN STREET WILMINGTON, MA 01887</div>					
			TEMPLATE ENGINEER BILLY PHILLIPS		14APR21							
			HARDWARE SERVICES BOB MACDONALD		14APR21		TITLE FABRICATION EVAL - CN0581 - EBZ CUSTOMER EVALUATION Z					
			HARDWARE SYSTEMS DAVE WILLIAMS		14APR21							
MATERIAL			TEST ENGINEER NA		NA							
			COMPONENT ENGINEER ADGT LIBRARY		14APR21							
			TEST PROCESS NA		NA							
			HARDWARE RELEASE NA		NA							
FINISH			DESIGNER FILIP LUPAS		14APR21		SIZE	FSCM NO	DRAWING NUMBER	REV		
			PTD ENGINEER FILIP LUPAS		14APR21							
			CHECKER NA		NA							
DO NOT SCALE DWG							SCALE		1 / 1		SHEET 1 OF	

D

C

B

A



IMPEDANCE TABLE				
IMPEDANCE TOLERANCE: +/-10% EXTERNAL LAYER IMPEDANCE TRACES WITHOUT SOLDERMASK				
LAYER	50 OHM TRACE WIDTH	65 OHM TRACE WIDTH	90 OHM TRACE WIDTH/SPACE	75 OHM TRACE WIDTH/SPACE
TOP	-	-	-	-
X	-	-	-	-
X	-	-	-	-
BOTTOM	-	-	4 MILS/ 6 MILS	-

NOTE: DO NOT EDIT THIS TABLE MANUALLY;USE IMPEDANCE TABLE GENERATOR FROM ADI Tools.

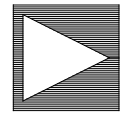
SPECIFICATIONS:

- ROHS COMPLIANCE NOTE: HOMOGENOUS MATERIALS IN THIS BOARD SHALL BE COMPLIANT THE EU RoHS DIRECTIVE 2002/95/EC
- MATERIALS: ALL LAMINATES AND BONDING MATERIALS SHOULD BE SELECTED FROM IPC-4101 OR IPC-4103, MINIMUM Tg>170degC, Td>300degC, U.L. RATING OF 94 V-0
- MATERIAL FAMILY: ISOLA370HR OR SI000-2 OR IT180 OR EQUIVALENT.
- CLADDING: EXTERNAL LAYERS .5 OZ. COPPER, OVERPLATE TO 1.5 OZ. INTERNAL SIGNAL LAYERS .5 OZ. COPPER. INTERNAL PLANE LAYERS 1 OZ. COPPER.
- NOTE: IF THE LAYER STACKUP CONFLICTS WITH THE ABOVE CLADDING SPECIFICATIONS THEN THE LAYER STACKUP SHALL TAKE PRECEDENCE.
- SOLDER MASK: SHALL BE LIQUID PHOTOIMAGEABLE (LPI) APPLIED ON BOTH SIDES OVER BARE COPPER OR GOLD AND SHALL MEET IPC-SM-840 (LATEST REV.) CLASS 3, COLOR BLUE.
- SILK SCREEN: SHALL BE PERMANENT NON-CONDUCTIVE EPOXY INK, COLOR: WHITE SYNTHETIC INKJET PRINTING ALLOWED FOR DENSE BOARDS, COLOR: WHITE
- SURFACE FINISH: ENIG (ELECTROLESS NICKEL/ IMMERSION GOLD) PER IPC-4552 LATEST REVISION
- INTENTIONAL SHORTS: IF SUPPLIED DATA INCLUDES A FILE "READ_ME.2", THEN INTENTIONAL NET SHORTS EXIST. CUSTOMER REVIEW AND APPROVAL IS REQUIRED IF SUPPLIED DATA REPORTS ANY CONDITION THAT DOES NOT MATCH "READ_ME.2" FILE PROVIDED.
- TEST REQUIREMENTS: 100% NETLIST ELECTRICAL VERIFICATION USING CUSTOMER SUPPLIED IPC-D-356 NETLIST FOR OPENS AND SHORTS WHEN "GERBER DATA" IS PROVIDED. THIS VERIFICATION ALSO REQUIRED FOR "ODB++" DATA PER EMBEDDED NETLIST.

REQUIREMENTS:

- REFER TO IPC-6010 SERIES (LATEST REV.), CLASS 2 FOR FABRICATION UNLESS OTHERWISE SPECIFIED.
- ACCEPTABILITY PER ANALOG DEVICES, INC. SPECIFICATION TST00115, (LATEST REVISION.)
- MODIFICATIONS TO THE ARTWORK ARE NOT ALLOWED WITHOUT WRITTEN AUTHORIZATION.
- HOLE PATTERN TOLERANCES FOR UNDIMENSIONED HOLES SHALL BE A DIAMETER OF 0.005 INCHES FROM THEIR TRUE POSITION.
- PLATED HOLE WALL THICKNESS SHALL NOT BE LESS THAN 0.001 INCH MINIMUM AVERAGE, WITH NO READING LESS THAN .0008 INCH BY CROSS SECTION.
- HOLE DIAMETERS APPLY AFTER PLATING.
- FINISHED CONDUCTOR WIDTHS SHALL NOT BE REDUCED FROM THE NOMINAL INDICATED ON THE MASTER PATTERN, BY MORE THAN THE CONDUCTOR THICKNESS.
- MINIMUM DESIGN LINE WIDTH IS .004 INCH.
- MINIMUM DESIGN SPACING IS .006 INCH.
- NON-FUNCTIONAL PAD REMOVAL FROM INNER SIGNAL LAYERS MAY BE PERFORMED AFTER CUSTOMER APPROVAL.
- IF PAD SIZES PROVIDED ARE NOT LARGE ENOUGH TO MAINTAIN ANNULAR RING REQUIREMENT, MFGR. MAY REQUEST APPROVAL TO TEAR DROP PADS TO MAINTAIN ANNULAR RING. (AT PAD TO TRACE INTERSECTION ONLY AND ELECTRICAL INTEGRITY MUST BE MAINTAINED.)
- THIEVING MAY BE ADDED TO COMPENSATE FOR LOW COPPER DENSITY AREAS ON THIS DESIGN ONLY AFTER REVIEW AND APPROVAL FROM THE CUSTOMER:
 - THIEVING TO CARD EDGE, FIDUCIALS, NON-PLATED THROUGH HOLES, ALL OTHER FEATURES TO BE 0.200 INCH MINIMUM.
 - THERE SHALL BE NO THIEVING IN ANY AREAS FREE OF SOLDER MASK OR INTERNAL COPPER PLANES.
- MFGR. TO LEGIBLY ETCH OR STAMP/SCREEN WITH PERMANENT NON-CONDUCTIVE INK ON SECONDARY SIDE IN A CLEAR AREA UNLESS OTHERWISE INDICATED:
 - U.L. CODE-FLAMMABILITY RATING
 - DATE CODE (STAMP).
 - LOT NUMBER
 - MFGR LOGO
 - SUCCESSFUL ELECTRICAL TEST.
- REPAIRS PER IPC-7711/21 (LATEST REV.) ARE ALLOWED.
- THRU VIAS FILLED WITH NON-CONDUCTIVE EPOXY AND PLATED OVER.

PRIMARY SIDE

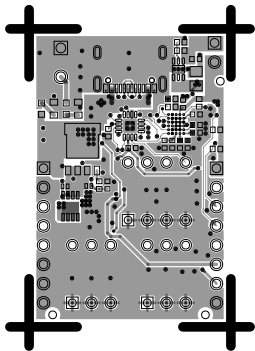


**ANALOG
DEVICES**

WWM
DIVISION
804 WOBURN STREET
WILMINGTON, MA 01887

SIZE	FSCM NO	DRAWING NUMBER	REV
D	24355	09-069500	B
SCALE	1/1	SHEET 2 OF 2	

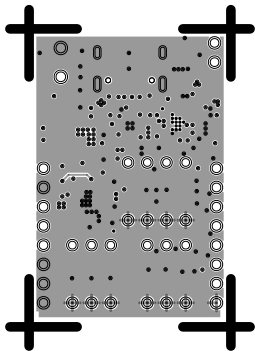
L1 PRIMARY
08-069500-01
REV B



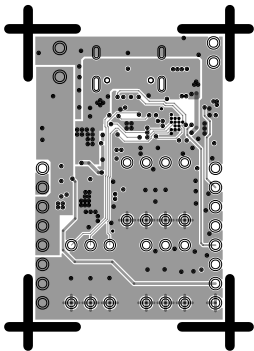
L2 GND

08-069500-07

REV B



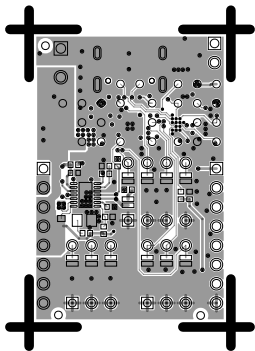
L3 SIG/PWR
08-069500-08
REV B



L4 SECONDARY

08-069500-02

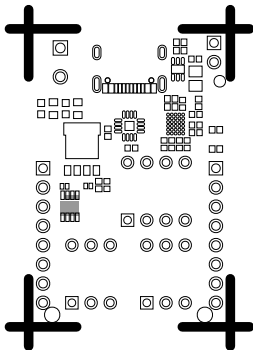
REV B



SOLDERMASK PRIMARY

08-069500-04

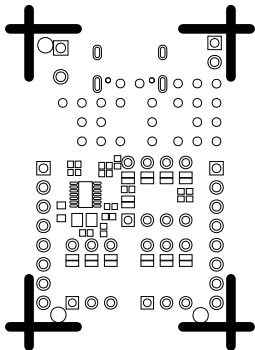
REV B



SOLDERMASK SECONDARY

08-069500-06

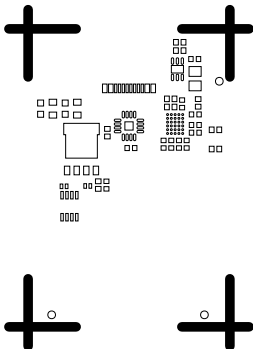
REV B



PASTEMASK PRIMARY

08-069500-09

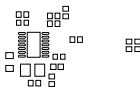
REV B



PASTEMASK SECONDARY

08-069500-10

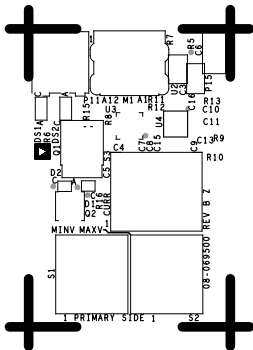
REV B



SILKSCREEN PRIMARY

08-069500-03

REV B



REV B

